

Public Document Pack



NOTICE OF MEETING

Meeting	Corporate Parenting Board
Date and Time	Monday, 26th March, 2018 at 2.00 pm
Place	Chute Room - HCC
Enquiries to	members.services@hants.gov.uk

John Coughlan CBE
Chief Executive
The Castle, Winchester SO23 8UJ

FILMING AND BROADCAST NOTIFICATION

This meeting may be recorded and broadcast live on the County Council's website. The meeting may also be recorded and broadcast by the press and members of the public – please see the Filming Protocol available on the County Council's website.

AGENDA

1. APOLOGIES FOR ABSENCE

To receive any apologies for absence received.

2. DECLARATIONS OF INTEREST

All Members who believe they have a Disclosable Pecuniary Interest in any matter to be considered at the meeting must declare that interest and, having regard to the circumstances described in Part 3 Paragraph 1.5 of the County Council's Members' Code of Conduct, leave the meeting while the matter is discussed, save for exercising any right to speak in accordance with Paragraph 1.6 of the Code. Furthermore all Members with a Non-Pecuniary interest in a matter being considered at the meeting should consider whether such interest should be declared, and having regard to Part 5, Paragraph 2 of the Code, consider whether it is appropriate to leave the meeting while the matter is discussed, save for exercising any right to speak in accordance with the Code.

3. MINUTES OF PREVIOUS MEETING (Pages 5 - 6)

To confirm the minutes of the previous meeting.

4. DEPUTATIONS

To receive any deputations notified under Standing Order 12.

5. CHAIRMAN'S ANNOUNCEMENTS

To receive any announcements the Chairman may wish to make.

6. CORPORATE PARENTING BOARD- KEY PERFORMANCE INDICATORS (Pages 7 - 16)

To receive a report from the Director of Children's Services providing an update on the Key Performance Indicators of the Corporate Parenting Board.

7. CSD CARE LEAVERS UPDATE (TO INCLUDE LOCAL OFFER AND FEEDBACK) (Pages 17 - 20)

To receive a presentation from the Director of Children's Services providing an update on Care Leavers, including the Local Offer and its feedback.

8. CSD CHILDREN IN CARE UPDATE (Pages 21 - 24)

To receive a presentation from the Director of Children's Services providing an update on Children in Care.

9. CHILDREN IN CARE AND CARE LEAVERS EDUCATION UPDATE (Pages 25 - 28)

To receive a presentation from the Director of Children's Services providing an update on the Education of Children in Care and Care Leavers.

10. CHILDREN IN CARE AND CARE LEAVERS HEALTH UPDATE (Pages 29 - 36)

To receive a presentation from the Director of Children's Services providing an update on the Health of Children in Care and Care Leavers.

11. USE OF TECHNOLOGY TO INCREASE THE INVOLVEMENT OF YOUNG PEOPLE & CARE AMBASSADORS

To receive a verbal update from the Director of Children's Services providing an overview of the use of technology to increase involvement of Young People and Care Ambassadors.

12. OUTCOMES OF THE BRIGHT SPOTS SURVEY IN RELATION TO EDUCATION FOR CHILDREN IN CARE AND ACTION PLAN REF BULLYING (Pages 37 - 50)

To receive a presentation from the Director of Children's Services providing an update on the outcomes of the Bright Spots survey in relation to Education for Children in Care. Furthermore, to note the action plan in relation to Bullying following the Survey.

Exclusion of Press and Public

Recommendation:

To Resolve, that in relation to the following items the press and public be excluded from the meeting, as it is likely, in view of the nature of the business to be transacted or the nature of proceedings, that if a member of the public were present during the items there would be disclosure to them of exempt information within Paragraph 1 & 2 of Part 1 of Schedule 12A of the Local Government Act 1972, and further that in all circumstances of the case, the public interest in maintaining the exempt information outweighs the public interest in disclosing the information, for the reasons of protecting the identity of individuals who have been, or still are, known to Hampshire's Care system.

13. FEEDBACK FROM CHILDREN IN CARE AND CARE LEAVERS/CARE AMBASSADORS

To receive a verbal update from the Director of Children's Services providing feedback from Children in Care, Care Leavers & Care Ambassadors.

ABOUT THIS AGENDA:

On request, this agenda can be provided in alternative versions (such as large print, Braille or audio) and in alternative languages.

ABOUT THIS MEETING:

The press and public are welcome to attend the public sessions of the meeting. If you have any particular requirements, for example if you require wheelchair access, please contact members.services@hants.gov.uk for assistance.

County Councillors attending as appointed members of this Committee or by virtue of Standing Order 18.5; or with the concurrence of the Chairman in connection with their duties as members of the Council or as a local County Councillor qualify for travelling expenses.

This page is intentionally left blank

Public Document Pack Agenda Item 3

AT A MEETING of the Corporate Parenting Board of HAMPSHIRE COUNTY COUNCIL held at the Castle, Winchester on Monday 27th November 2017

Chairman:
p Councillor Roz Chadd

p Councillor Ann Briggs

p Councillor Malcolm Wade

Co-opted members

a Carol Ivermee, Care Ambassador

p Shannon Nicholls, Care Ambassador

p Carla Wright, Care Ambassador

1. APOLOGIES FOR ABSENCE

Apologies were received from Carol Ivermee, Care Ambassador.

2. DECLARATIONS OF INTEREST

Members were mindful that where they believed they had a Disclosable Pecuniary Interest in any matter considered at the meeting they must declare that interest at the time of the relevant debate and, having regard to the circumstances described in Part 3, Paragraph 1.5 of the County Council's Members' Code of Conduct, leave the meeting while the matter was discussed, save for exercising any right to speak in accordance with Paragraph 1.6 of the Code. Furthermore Members were mindful that where they believed they had a Non-Pecuniary interest in a matter being considered at the meeting they considered whether such interest should be declared, and having regard to Part 5, Paragraph 2 of the Code, considered whether it was appropriate to leave the meeting whilst the matter was discussed, save for exercising any right to speak in accordance with the Code.

3. DEPUTATIONS

No deputations were received.

4. CHAIRMAN'S ANNOUNCEMENTS

The Chairman welcomed everyone to the first meeting of the Corporate Parenting Board and introduced herself. The Chairman asked all present to also introduce themselves and share their experience that is relevant to the Board.

5. INTRODUCTION TO THE CORPORATE PARENTING BOARD

The Panel received a report of the Director of Children's Services (Item 5 in the Minute Book) providing an Introduction to the Corporate Parenting Board.

The presentation highlighted the purpose and function of the Corporate Parenting Board and a structure for how these would be met. Officers introduced

Members of the Panel to the 'Hampshire's Pledge' in relation to Children in Care and Care Leavers and ten areas of consideration for future items.

In response to questions members heard that;

- There is difficulty for Care Leavers around housing and the split responsibilities between County and District/Borough Councils in relation to Care Leavers and Housing. However this may be set to change with the increased scope of Corporate Parenting introduced in the Children and Social Care Act 2017.

Resolved: That the Corporate Parenting Board note the role and remit of the Corporate Parenting Board in line with it's Terms of Reference.

6. **PROTOCOL BETWEEN THE HAMPSHIRE SAFEGUARDING CHILDREN BOARD AND THE CORPORATE PARENTING BOARD**

The Panel received a report of the Director of Children's Services (Item 6 in the Minute Book) in relation to a draft protocol between the Hampshire Safeguarding Children's Board and the Corporate Parenting Board due to an overlap in their responsibilities.

Resolved: That the Corporate Parenting Board note the role and function of the Hampshire Safeguarding Children Board (HSCB), and approve the proposed Protocol outlining how the two Boards will exchange information and work together on areas of mutual interest.

7. **WORK PLAN**

Officers and Members of the Panel discussed areas they would like to see discussed at future meetings of the Corporate Parenting Board, informed by the Introduction received earlier. A number of items were identified and an agenda for the next meeting was agreed.

Chairman, Corporate Parenting Board

HAMPSHIRE COUNTY COUNCIL

Report

Committee/Panel:	Corporate Parenting Board
Date:	14 March 2018
Title:	Corporate Parenting Board – Key Performance Indicators
Report From:	Director of Children’s Services

Contact name: Roger Warren, District Service Manager

Tel: 01256 362083

Email: Roger.Warren@hants.gov.uk

1. Recommendation

- 1.1. That the Corporate Parenting Board notes the Key performance Indicators with a view to monitoring these in the future.
- 1.2. That the outcomes of the benchmarking exercise in relation to the education of Children Looked After (and those previously looked after) be provided to a future Corporate Parenting Board.

2. Summary

- 2.1. The purpose of this paper is to report to the Corporate Parenting Board on the overall progress of the Child Looked After sector of Children’s Services.

3. Children in Care Performance Indicators

- 3.1. The report below gives an explanation and rolling year data for the children in care performance indicators. These are set out below;

R83.1, R83.2, R83.4 - CLA Health Monitoring

R147 - CLA Permanence

R86 - SDQ’s (Coverage and Mean scores)

R66 - Missing Children

R63 - The percentage of children looked after at year end with 3 or more placements during the year

R64 - The Percentage of LAC under 16 who have been looked after continuously for 2.5yrs who were living in the same placement for at least 2 years, or placed for adoption and their adoptive and previous placement together lasted for more than 2 years.

R72 – CLA Attendance

R150 – SERAFS

4. CLA Health Monitoring

4.1. Shows the health care of children who have been looked after continuously for at least 12 months.

4.2. R83.1 – Dental

4.3. This indicator looks at the dates recorded for completed dental checks for looked after children. The county target for this indicator is 85%. The table below shows data for 12 months rolling year for January 2018.

	Jan-18			latest month trend
District of Team Responsible	Dental Checks	CLA > 12+ Months	%	
East	299	481	62.2%	▼
West	442	531	83.2%	▼
County	777	1081	71.9%	▼

4.4. R83.2 – Health

4.5. This indicator looks at the dates recorded for completed health assessments for looked after children. The county target for this indicator is 85%. The table below shows data for 12 months rolling year for January 2018.

	Jan-18			latest month trend
District of Team Responsible	Health Check	CLA > 12+ Months	%	
East	275	481	57.2%	▼
West	341	531	64.2%	▼
County	683	1081	63.2%	▼

4.6. R83.4 - CLA Immunisations

4.7. This indicator looks at recording of immunisations recorded for looked after children. This indicator looks at those who have been looked after continuously for at least 12 months. The county target for this is indicator 80%. The table below shows data for 12 months rolling year for January 2018.

	Jan-2018			Latest Month Trend
Team Responsible District	Up to date	CLA Cohort	%	
East	302	481	62.8%	▲
West	347	531	65.3%	▲
County	669	1081	61.9%	▲

4.8. R147 – CLA Permanence

4.9. This indicator looks at Permanency Plans and Permanency Achieved. This is recorded on the system once the panel decides that permanency is in a child's best interest. This then denotes the formal start of a permanency plan. When a child's placement is agreed to have achieved the goal of Permanency, this is recorded by a "IRO Note - Linked to Permanent Placement" case note. There no current county target for this indicator. The table below shows data for 12 months rolling year for January 2018.

Area	Key Team District	No. of Current CLA	No. of Permanency Plans	No. of Permanency Achieved
East Total		478	153	103
West Total		531	238	169
Total		1078	392	272

4.10. R86 CLA SDQ's

4.11. This indicator looks at all looked after children regardless of when they came into care. A Strength and Difficulties Questionnaire should be completed at least once per year in respect of every child in care aged 4 - 16 by the child's carer. This indicator looks at both the mean score of an SDQ and the coverage %.

4.12. The mean score of an SDQ is made up of the total number of SDQ's completed, divided by the total score of each completed SDQ. A higher mean score would indicate higher complexity with the team caseload. This is not a measurable indicator of the performance of the individual team.

4.13. The average county mean score target is 13. The table below shows data for 12 months rolling year for January 2018.

Area	Jan-18		
	b	a	Ave
East Total	3419	239	14.3
West Total	3387	248	13.7
Grand Total	6872	490	14.0

4.14. The coverage score is made up from the total number of SDQ's completed with in the team. This gives a measurable indication of performance for completing SDQ's.

4.15. The average county coverage target 75%. The table below shows data for 12 months rolling year for January 2018.

Area	Jan-18		Coverage%
	SDQs Completed	SDQs Required	
East Total	239	406	58.9%
West Total	248	451	55.0%
Grand Total	490	887	55.2%

4.16. R66- Mispers

4.17. This indicator looks at the percentage of children looked after who went missing from care (for 24 hours or more) during the year as a percentage of all children looked after during the year.

4.18. The table below shows data for 12 months rolling year for January 2018

Area & District of Team Responsible	January-2018			latest month trend
	CLA Reported Missing 24 hrs	CLA During Year	%	
East	75	948	7.9%	▼
West	67	906	7.4%	▲
County	142	2030	7.0%	▲

4.19. R63 - The percentage of children looked after at year end with 3 or more placements during the year

4.20. This indicator looks at the percentage of children looked after who have had three or more placements within the year (rolling year). The county target is 13%. The table below shows data for 12 months rolling year for January 2018

Area & District of Team Responsible	January-2018		
	The number of CLA having 3+ placements	CLA During Year	%
East	125	726	17.2%
West	137	735	18.6%
County	286	1,564	18.3%

4.21. R64 – This is indicator shows the Percentage of LAC under 16 who have been looked after continuously for 2.5yrs who were living in the same placement for at least 2 years, or placed for adoption and their adoptive and previous placement together lasted for more than 2 years.

4.22. The county target is 66%. The data below shows the rolling year.

		Jan-18		
KT Area	Key Team	b	a	%
East Total		143	238	60.1%
West Total		179	257	69.6%
Non-specific Total				
Grand Total		327	508	64.4%

4.23. R72 – CLA Attendance

4.24. Children looked after continuously for at least 12 months –The % of sessions missed over the last 12 months due to authorised and un-authorised absences.

4.25. The county target is 5%. The table below shows the data (academic year to date)

	02/02/2018					
C&F Key Team	Count of Swift ID	Sum of Total Available Sessions	Sum of Total Auth Absent Sessions	% Auth Abs	Sum of Total Un-Auth Absent Sessions	% Un Ath Abs
East	389	69169	4186	6.1%	1379	2.0%
West	421	73233	3897	5.3%	1220	1.7%
County	836	146100	8254	5.6%	2601	1.8%

4.26. R150 – SERAFS

4.27. SERAFs and other risk assessments to be completed and reviewed. Note that this indicator records SERAFs that have been completed and if they have been completed correctly. There is currently no tracking report that measures the compliance of SERAFs for all of those children that are eligible for one.

4.28. The county target for SERAFS is 100%.

KT Area	KT District	On-going	Complete	Ended but detail missing ²	Ended but not Authorised	On-going, but score shown	Ended but no scoring	Grand Total
East Total		76	475	14	8	1	47	628
West Total		92	522	57	18	1	13	723
Grand Total		216	1,099	84	31	3	65	1,530

5. Education:

5.1. Provisional results for 2017

Provisional results for children in care 2017 (subject to change)			
Early Years Foundation Stage	Key Stage 1 (age 7)	Key Stage 2 (age 11)	Key Stage 4 (age 16)
41% achieved a 'Good Level of Development'(35.5% 2016)	37% achieved the 'expected standard' or above in all subjects (same as 2016)	26% achieved the 'expected standard' or above in all subjects (24% 2016)	19.1% achieved the 'Basics' measure – levels 4 and above (roughly equivalent to C grade and above) in both English and Maths (16.7% 2016)

5.2. 90% of children in care are now in a school OFSTED rates as good or outstanding.

5.3. Nearly 60% of children looked after had school attendance above 95% during 2016-17. 8 % had 100% attendance.

5.4. However there is still a need to focus on reducing overall and persistent absence for Hampshire's children in care which is above the national children looked after figure.

5.5. The Virtual School has worked with over 100 teachers as part of our Attachment and Trauma Aware (ATAS) Schools programme. Participants are

now trained in 'emotion coaching' and using this to support children young people' with their emotional health needs in schools.

- 5.6.** We have launched the 'Virtual College' in partnership with Hampshire Futures 5 new team members will support young people on to education, employment or training at age 16 and beyond.
- 5.7.** New statutory guidance for Local Authorities around the education of children looked after (and those previously looked after) has been published by the Virtual School. A benchmarking exercise against current practice is now being undertaken and an update can be provided to the next Corporate Parenting Board.

CORPORATE OR LEGAL INFORMATION:**Links to the Strategic Plan**

Hampshire maintains strong and sustainable economic growth and prosperity:	No
People in Hampshire live safe, healthy and independent lives:	Yes
People in Hampshire enjoy a rich and diverse environment:	No
People in Hampshire enjoy being part of strong, inclusive communities:	Yes
OR	
This proposal does not link to the Strategic Plan but, nevertheless, requires a decision because:	

Other Significant Links

Links to previous Member decisions:	
<u>Title</u>	<u>Date</u>
Direct links to specific legislation or Government Directives	
<u>Title</u>	<u>Date</u>

Section 100 D - Local Government Act 1972 - background documents

The following documents discuss facts or matters on which this report, or an important part of it, is based and have been relied upon to a material extent in the preparation of this report. (NB: the list excludes published works and any documents which disclose exempt or confidential information as defined in the Act.)

<u>Document</u>	<u>Location</u>
None	

IMPACT ASSESSMENTS:

1. Equality Duty

1.1. The County Council has a duty under Section 149 of the Equality Act 2010 ('the Act') to have due regard in the exercise of its functions to the need to:

Eliminate discrimination, harassment and victimisation and any other conduct prohibited under the Act;

Advance equality of opportunity between persons who share a relevant protected characteristic (age, disability, gender reassignment, pregnancy and maternity, race, religion or belief, gender and sexual orientation) and those who do not share it;

Foster good relations between persons who share a relevant protected characteristic and persons who do not share it.

Due regard in this context involves having due regard in particular to:

The need to remove or minimise disadvantages suffered by persons sharing a relevant characteristic connected to that characteristic;

Take steps to meet the needs of persons sharing a relevant protected characteristic different from the needs of persons who do not share it;

Encourage persons sharing a relevant protected characteristic to participate in public life or in any other activity which participation by such persons is disproportionately low.

1.2. Equalities Impact Assessment:

Due to the nature of this report an Equalities Impact Assessment has not been completed.

2. Impact on Crime and Disorder:

Due to the nature of this report there is no impact on Crime and Disorder.

3. Climate Change:

How does what is being proposed impact on our carbon footprint / energy consumption?

Due to the nature of this report there is no impact on Climate Change.

How does what is being proposed consider the need to adapt to climate change, and be resilient to its longer term impacts?

Due to the nature of this report there is no impact on Climate Change.

This page is intentionally left blank

The Children and Social Worker Act 2017 and the local offer for care leavers

Juliette Blake

Our progress

- HCC have consulted with 525 care leavers and had responses from 54- this is a good outcome, as we know surveys tend to have a 13% response rate
- Work is being undertaken to ask district councils to consider council tax exemption for care leavers

- HCC are working with 2 charities to offer support to care leavers; a third charity has now asked how they can support
- HCC is working with health and there is a current consultation with care leavers in relation to labelling their GP records to show they are care leavers
- We have a pilot starting in April 2018 in the south west offering a greater variety of accommodation to care leavers, catering for individual needs

- A joint protocol has been created between children's and adults' services to ensure care leavers do not fall between the gap if one service closes the case
- PIP is working to recruit 8 mental health practitioners whose role will include working with our care leavers



Hampshire County Council

Children in Care Updates

- Performance- Health recording.
- Role Out of PA's in CIC teams
- Reunification agenda.
- New CIC Team.
- PCT/Frontline team- better matching/communication.
- UASC- more SMART use of resources.

Children in Care updates.

- Staff training and Retention (GETS programme).
- Hybrid IT devices flexible working.
- Participation/Direct Work.

This page is intentionally left blank

Education of Hampshire children looked after

Provisional results for children in care 2017 (subject to change)

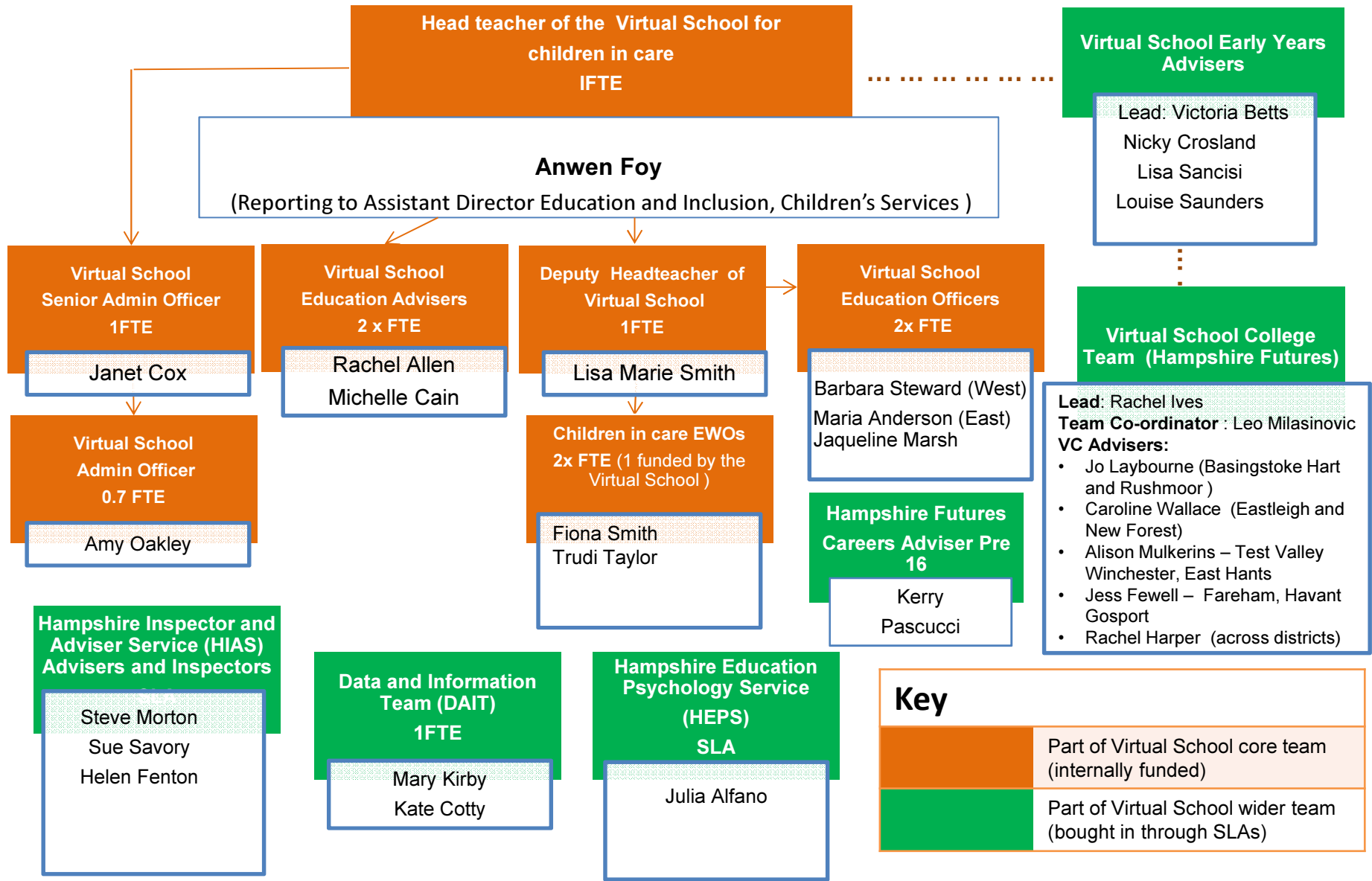
Early Years Foundation Stage	Key Stage 1 (age 7)	Key Stage 2 (age 11)	Key Stage 4 (age 16)
41% achieved a 'Good Level of Development'(35.5% 2016)	37% achieved the 'expected standard' or above in all subjects (same as 2016)	26% achieved the 'expected standard' or above in all subjects (24% 2016)	19.1% achieved the 'Basics' measure – levels 4 and above (roughly equivalent to C grade and above) in both English and Maths (16.7% 2016)

Highlights from 2016-17

91% of children in care are now in a school OFSTED rates as good or outstanding	Over 100 teachers now trained in 'emotion coaching' and using this to support children young people' with their emotional health needs	Nearly 60% of children looked after had school attendance above 95% during 2016-17. 8 % had 100% attendance.	We have launched the 'Virtual College' in partnership with Hampshire Futures – 5 new team members will support young people on to education, employment or training at age 16 and beyond.
---	--	--	---

Priorities for the Virtual School What will we do?	How will we do it?
<p>Work with schools, social workers and carers to help children and young people who are persistently absent (below 90%) to improve their school attendance.</p>	<p>Learn from those children and young people who already do attend well. Work hard to understand the barriers to good school attendance and ensure young people receive appropriate support to overcome them.</p>
<p>Work with schools to reduce the percentage of CLA with fixed term exclusions.</p>	<p>Consider alternatives to exclusion and share best practice from schools who already do this.</p>
<p>Improve the way we report progress made by CLA with special educational needs.</p>	<p>Work with Special Schools to find better ways to show the progress children make. As part of this, work towards one plan which combines a PEP with EHCP.</p>
<p>Work with social workers and Designated Teachers to develop Personal Education Plans, which are completed on time and to be highest possible standard, where the young person's needs are central.</p>	<p>Carefully and regularly monitor the quality of PEPs, challenging DTs and SWs around quality and timeliness of PEPs.</p>
<p>Ensure consistent support is in place for young people to help them to choose and sustain the right post 16 education, employment and training for their needs and goals.</p>	<p>Work with the Virtual College team to provide early and individualised support to young people around their post 16 choices.</p>

Hampshire Virtual School and college for Children in Care 2017 - 18



New Statutory guidance for Local Authorities:

Promoting the education of looked after children and previously looked after children

February 2018

<https://www.gov.uk/government/publications/promoting-the-education-of-looked-after-children>

Key changes

- Virtual Schools must also provide advice and guidance to promote the educational achievement of *previously looked after* children in their area
- Virtual School Heads must consider how to apply the 7 corporate parenting principles set out in the Children and Social Work Act 2017
- Virtual Schools must work with others to carefully monitor the educational progress of Unaccompanied Asylum Seeking Children (UASC)
- A new section on mental health has been added to the guidance requiring that Virtual School teams are trained and able to support schools to identify signs of potential mental health issues and know how to access further assessment

This new guidance has wider implications for:

- Lead Members for Children's Services
- Directors of Children's Services and departmental management teams
- Corporate Parenting Boards
- Virtual School Heads and their teams
- Social workers and managers
- Foster carers
- Adoptive parents
- Independent Reviewing Officers
- Placement Commissioning teams
- LA post adoption support teams
- School Admission teams
- Inclusion and SEN teams
- Hampshire Futures, Care leaver teams and Personal Advisers
- Head Teachers and Governors
- School Improvement Managers and teams
- Designated Teachers for children in care
- Workforce Development teams and HTLC (Hampshire Teaching and Leadership College)
- Health professionals
- YOT



West Hampshire
Clinical Commissioning Group

Health of Children in Care and Care Leavers

Naomi Black

Designated Nurse for Children in Care

March 2018

This service is provided for Fareham and Gosport CCG, North East Hampshire and Farnham CCG,
North Hampshire CCG, South Eastern Hampshire CCG and West Hampshire CCG

Quality services, better health



Health of Children in Care

- **Dental Health:** No issues accessing an NHS Dentists for children in care (CIC) in Hampshire
- NHS England Wessex Public Health Consultant in Dental Health has developed a “Maintaining Oral Health” fact sheet to which all foster carers have access
- Dental appointments are recorded on all health assessment paperwork which is submitted to children services
- **Immunisation Uptake Rates:** Once health are notified of a child coming into care a summary of the immunisations are obtained and sent to the child's Social Worker for inclusion on the ICS system
- If a child is missing immunisation a matrix against their age is applied to identify what is required to catch up - some vaccines such as flu if missed means that children will always have an incomplete immunisation record as a catch is not an option.



- **Statutory Health Assessments:**

- **Initial Health Assessments-** Required to be undertaken within 28 days of coming into care by a medical practitioner (Dr)

Currently:

- Operating a GP Hub model across Hampshire - The Hubs have received encouraging reviews from foster carers, children and clinicians, with foster carers reporting very positive experiences around quality
- From receipt of correct paperwork to completion of the health assessment for Hampshire children placed in Hampshire- 89% achieved in timescales
- This is more challenging for those placed out of Hampshire as there is a national issue with capacity of services around the country



- **Statutory Health Assessments:**

- **Review Health Assessments-** are undertaken six monthly on children under four years of age and annually on 5-18 year olds. These can be undertaken by nurses, midwives and health visitors.

Currently:

- Whole system is currently under review from children services requests to health provider delivery in Hampshire to improve efficiency and sustainability – currently a recognised challenge around increasing demand
- Implementation of “Health Questionnaire” to be used with those CIC in long term stable placements aged 9 year olds and older
- Looking to enable children to be seen in school, be allowed to attend late to school or go home early to enable the health assessment to occur.



- **Strength and Difficulties Questionnaire (S & D Qs)**
- Process initiated by Children Services if child 4 to 16 years of age is to remain in care for more than 2 months following 1st Statutory Review. Repeated at 12 months in care. Outcome detail from the questionnaire should be shared with both Education and Health to inform their plans. First questionnaire completed by the carer and depending on result is triangulated with the school and the child.

Currently:

- Four statistical neighbours to Hampshire County: Worcestershire, Berkshire, Cambridge and Somerset report similar return rates for the foster carers questionnaire
- Two statistical neighbours manage the process through Children Services similar to Hampshire and two via their LAC health teams



- **Child and Adolescent Mental Health (CAMHS)**- This service is commissioned by Children and Maternity Commissioning Collaborative for the 5 CCGs for Hampshire. The current provider is Sussex Partnership NHS Foundation Trust.

Currently:

- Specific CiC lead in the Hampshire CAMHS organisation
- CAMHS have developed care pathways for transition
- There are specific referral criteria for prioritisation of CiC into the service

Overview and CQC inspection ratings

Overall Good Read overall summary	Safe	Good ●
	Effective	Good ●
	Caring	Outstanding ☆
	Responsive	Good ●
	Well-led	Good ●

Quality services, better health



Care Leavers Health

- Need support from PAs to register as an adult if changing practice for GP and Dentist
- Dental care will cost as per other patients unless they have an exemption e.g. receiving low income benefits; under 19 and in full-time education; a valid NHS tax credit exemption certificate or a valid HC2 certificate
- Transition into adult health services can be problematic as thresholds are different



Work currently being undertaken by Designated Doctor and Designated Nurse in relation to Care Leavers

- Survey with all Hampshire Care Leavers about “Read Code” “flagging” on Primary Care medical records which identify they are a care leaver
- Development of a strategy to support the health of children in care and care leavers following feedback from the Clinical Commissioning Groups (CCGs) safeguarding conference and in light of the Children and Social Work Act 2017
- Information leaflet/website content/app use on supporting care leavers health
- Identification and development of transition pathways to support children in care into adult services



BRIGHT SPOTS

SURVEYS OF THE VIEWS OF LOOKED AFTER CHILDREN AGED 4 – 18 YEARS IN HAMPSHIRE

Background

The BS partnership - between **'Coram voice'** and **University of Bristol**

- Aims to **improve the experience** of care
- **Give children a voice**
- Captures views 'unfiltered' via **anonymously completed** surveys
- **3 age appropriate surveys** (4 – 7 years; 8 – 11 years; secondary age children).

Methodology

- Hampshire: First survey. Completed over 5 months – focused on LAC reviews and managed through IROs.
- Reported in June 2017. Action plan developed and being implemented

Demographics

- Hampshire had very good response rates: 37%
- In every age group response rates were no lower than 36%
- Responses broadly reflected the gender and ethnic make up of the populations of LAC in Hampshire

Structure of Outcomes

- Detailed reports of over 90 pages covering:
 - Key Findings (IOW compares 2016 & 2017)
 - Methodology details
 - Whole survey findings
 - Children & young people's comments
 - Positive aspects and areas for improvement
 - References
- Summary or Key Findings – 1 or 2 pages

Headline Outcomes for HCC (1)

- Children and young people **felt well looked after** by their carers. They **trusted their carers** and their social workers
- The **majority liked school** and felt that their carers showed an interest in their education
- Many **wanted more contact and/or to understand** why contact was not occurring
- **Thirty percent of children (8-11yrs) were afraid to go to school because of bullying**

Headline Outcomes for HCC (2)

Wellbeing:

- 5% of children 4-7yrs, 7% of 8-11yrs and 18% of 11-18yrs had low well-being.
- Younger children, low well-being was associated with not understanding why they were in care, not knowing who their social worker was, feeling excluded from decision-making and being bullied at school.... more likely to lack a trusted adult in their lives - some did not have at least one good friend.
- •Older young people (11-18yrs) with low well-being were more likely to record they did not like their appearance, did not feel settled in their placements, did not feel safe, did not trust their social worker and were dissatisfied with their contact arrangements.

Headline Outcomes for HCC (3)

- Some of the negative comments were about being made to feel different because they were looked after, too many placement moves, not feeling settled and frequent changes of social worker. Some children did not have a good understanding of their care plans and/or permanence plans.
- However, the **majority of comments were positive about the experience of being in care**. Children and young people wrote that they **wanted to thank their carers and social workers, loved being in care and were given more opportunities. Unaccompanied Asylum Seeking Children in particular were very grateful** to their carers and the help they had received

Really Interesting!

So.....

WHO needs to do WHAT, WHEN?

The Plan!

Bullying at school

- We are talking to the people who run the schools, the Head Teachers and Governors. Because they need to know what children have said. They need to ensure everyone in their schools feel safe.
- We'll see if we can find a way to ask about this when the Personal Education Plans (PEPs) get agreed.
- Some children will have helped with another survey called 'What do I think?' at schools. We are looking at that too as that said most children think schools deal with bullying. So we need to really understand this better.
- The annual 'anti-bullying' conference (October) needs to better hear the voice of children in care.

Having a good friend

- The managers in charge of each district in Hampshire are setting up fun 'participation' events and sessions for all children in their districts who have a social worker. This will perhaps be a chance to meet a new friend.
- We are also talking to schools about how they welcome anyone new who is in care. Because they need to think about how they do that in a way that helps children find friendships without making a fuss about the fact that they are in care.

Made to feel 'different' because of being in care?

- We are reminding everyone who works with children in care to try to not do things that make them feel different. That might be how they talk, what they say to other people or when they arrange meetings.
- We also know Surrey University is looking at this issue. We want to know what they think might help. Because if someone else is doing work on this we need to learn from it too.

Knowing why you are in care and being involved in planning

- Social workers need to make sure children understand why they are in care and they need to involve children in planning and decision making. We are making sure Hampshire's social workers really get to grips with this and that it is reinforced when they go on courses and undertake training.

Too many moves?

- We know sometimes we move children more than is ideal. We can't promise 'no moves' but have said to children that we will try hard to make sure there are less moves and to explain clearly 'why' if you they do move. Children need to feel settled to get on with life, school and friends.